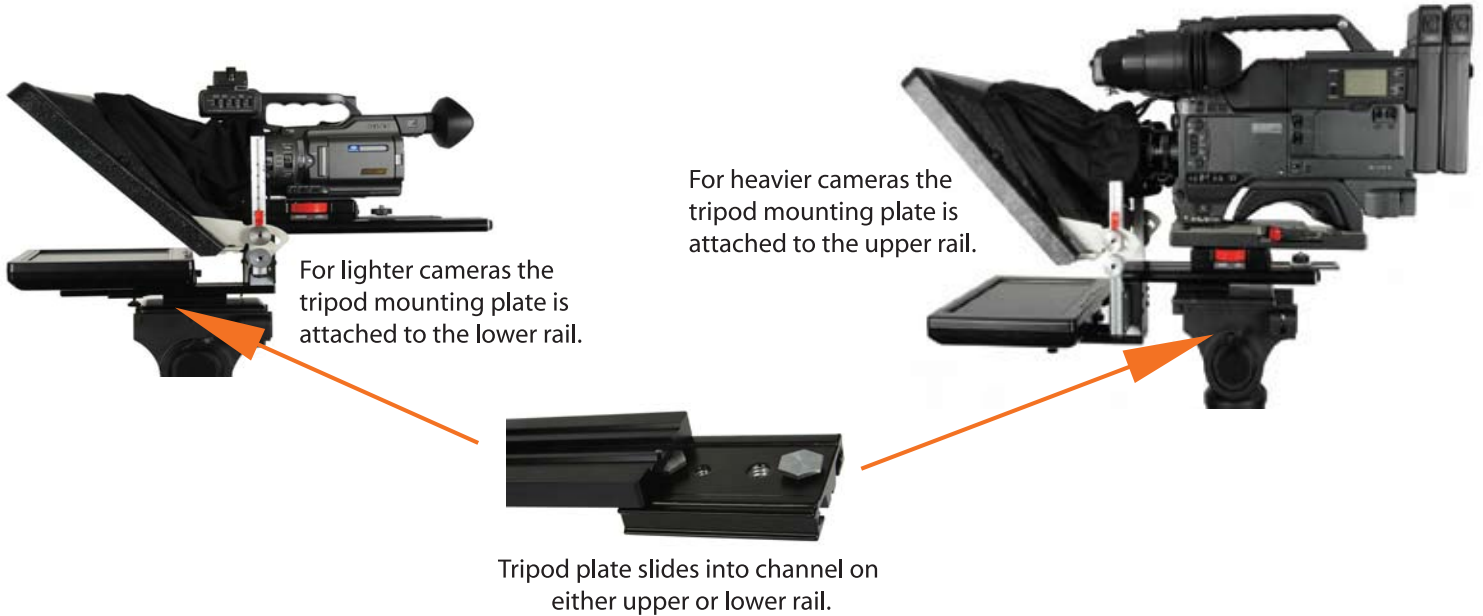


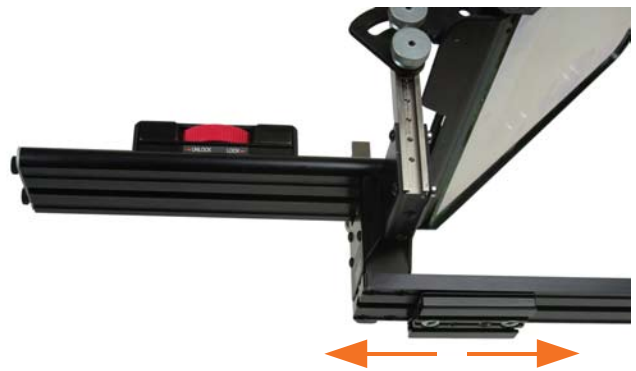
ProLine DV-11 ENG Set-Up Sheet

STEP 1 - ATTACH TRIPOD MOUNTING PLATE

The ProLine 11 ENG's patent pending mounting system allows the use of any size/weight camera. This mounting system allows the tripod mounting plate to be attached to either the upper rail or lower rail of the teleprompter. For heavier cameras mounting the tripod plate to the upper rail has the added benefit of lowering the center of gravity for improved tripod head operation. In addition, the tripod mounting plate can slide anywhere along the rails for precise balancing.



Loosen thumbscrews and lift up retaining plate on back of upper rail to slide on tripod mounting plate.



Slide tripod mounting plate front to back to balance teleprompter



Tighten screws to secure tripod plate. Screws can be tightened with a coin or screwdriver.



The tripod mounting plate offers both 1/4" and 3/8" industry standard mounting holes. Attach this plate to your tripod's quick release plate.

STEP 2 - LCD INSTALL

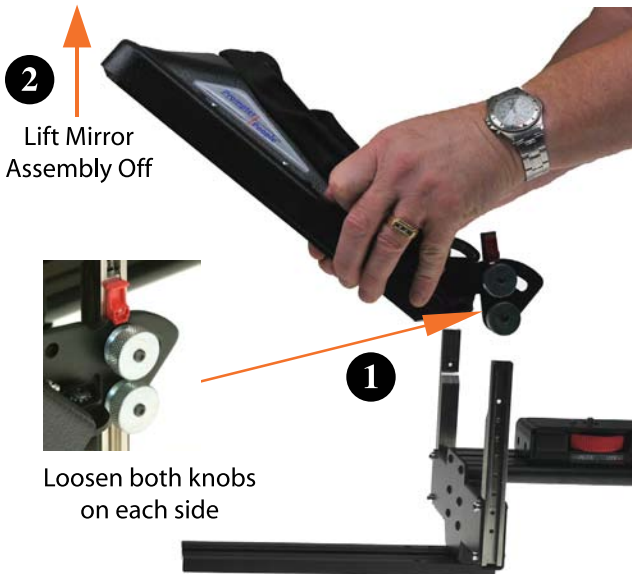
Slide the LCD monitor onto the lower rail and tighten the thumbscrew.

The LCD can be adjusted fore/aft by loosening the thumbscrew. To remove the LCD unscrew the thumbscrew all the way and slide the LCD off the rail.

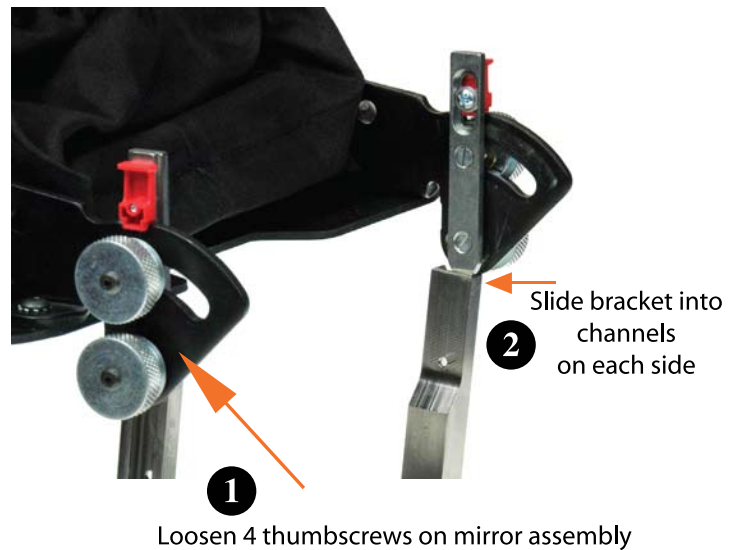
Note: The thumbscrew has a stop to keep it from coming out all the way.



MIRROR ASSEMBLY REMOVAL



MIRROR ASSEMBLY ATTACHMENT



ADJUSTING MIRROR ASSEMBLY

The ProLine 11 ENG's patent pending mirror assembly offers both height and angle adjustment. The mirror assembly can also be folded flat for easy, safe transport. The mirror assembly offers an infinitely adjustable angle and locks at the closed standard 45 degree positions. The mirror assembly can also be easily removed for more compact transport.

OPENING MIRROR ASSEMBLY



STEP 3 - ATTACH CAMERA TO TELEPROMPTER

The ProLine 11 ENG offers multiple methods for attaching your video camera. Larger cameras attach directly to the camera mounting block. Smaller cameras mount on the included dual height camera riser that attaches to the camera mounting block. The dual height camera riser also allows cameras with short or flush mounted lenses to get closer to the teleprompter mirror for optimum performance.

The ProLine 11 ENG has a height scale on the mirror assembly. To use this scale measure the center of the camera lens from the bottom of the camera.

MEASURE LENS HEIGHT

Measure from the bottom of the camera to the center of the lens. This is your camera lens height. Write down this number. You will use this number to adjust the mirror height in a later step.

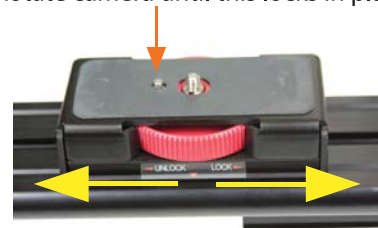


PLACE CAMERA ON SLED

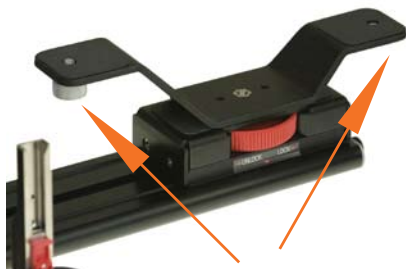
Place camera on camera mounting block.



The spring loaded pin locks into camera hole to keep camera from rotating. Rotate camera until this locks in place.



Turn the camera knob to secure camera. Loosen slightly to adjust camera position. When camera is in position turn knob to lock into place. Do not over tighten.



The camera thumbscrew can be removed from one end and attached to the other side.

USING DUAL HEIGHT RISER

The dual height camera riser is used with smaller cameras. To attach simply place riser on camera mounting block and tighten the camera block knob. Loosen slightly to adjust camera position.



Example of palm camcorder with riser block.

STEP 4 - CAMERA/LCD POSITION ADJUSTMENT

The ProLine 11 ENG's top mounted camera block makes fore/aft camera positioning a fast, tool-free procedure. Remove the lens shade on your camera so that the lens can get as close to the glass as possible. Then simply turn the large red, knurled knob to tighten or release the camera for easy adjustment. The cloth lens shade wraps around the lens to keep light from entering from the rear. The 10.4" LCD can be positioned fore/aft by loosening its thumbscrew. The LCD can be quickly removed for safe, compact transport. The mirror assembly can also be quickly removed for safe and compact transport.



Turn knob to left to unlock and to the right to lock. Remove the cameras lens shade. Position camera lens within 1/2" from glass.

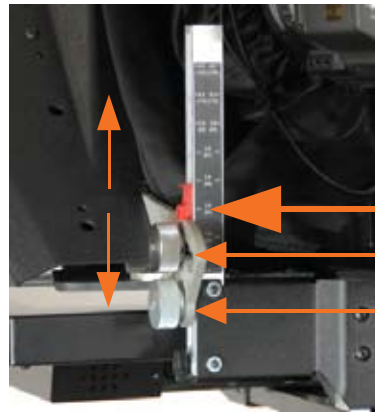


Once camera is positioned place lens shade around lens. Tighten lens shade with draw string.

ADJUSTING MIRROR HEIGHT



Raise the mirror assembly so that the camera lens is in the middle of the mirror.



To use height scale position the top of the bracket to the point on the scale that corresponds to your cameras lens height. Measure the lens height from the bottom of the camera.

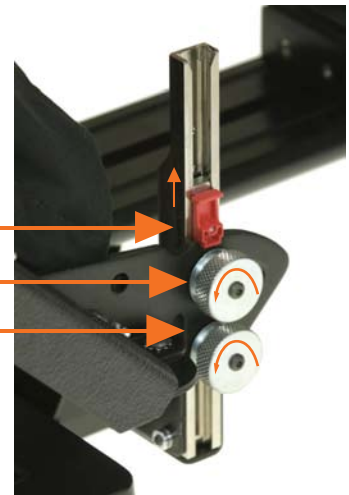
Tighten both knobs on each side to lock mirror height in place



ADJUSTING MIRROR ANGLE

To adjust mirror assembly to an angle other than 45 degrees do the following

1. Lift the angle lock on both sides.
2. *Slightly* loosen the four thumb screws,
3. Adjust angle and tighten knobs to lock



GLASS REMOVAL PROCEDURE

It is not normally necessary to remove the beamsplitter glass from the hood. In certain cases such as breakage or cleaning requirements the glass must be removed. The glass is easily removed by unscrewing the four screws on each side of the mirror assembly. To replace the glass just reverse the procedure.



PROLINE FEATURES

